

Implementing Sustainable Building in Affordable Housing



**Rob Howard, Habitat for Humanity International
Monte Morris, Habitat for Humanity of Greater Sacramento**



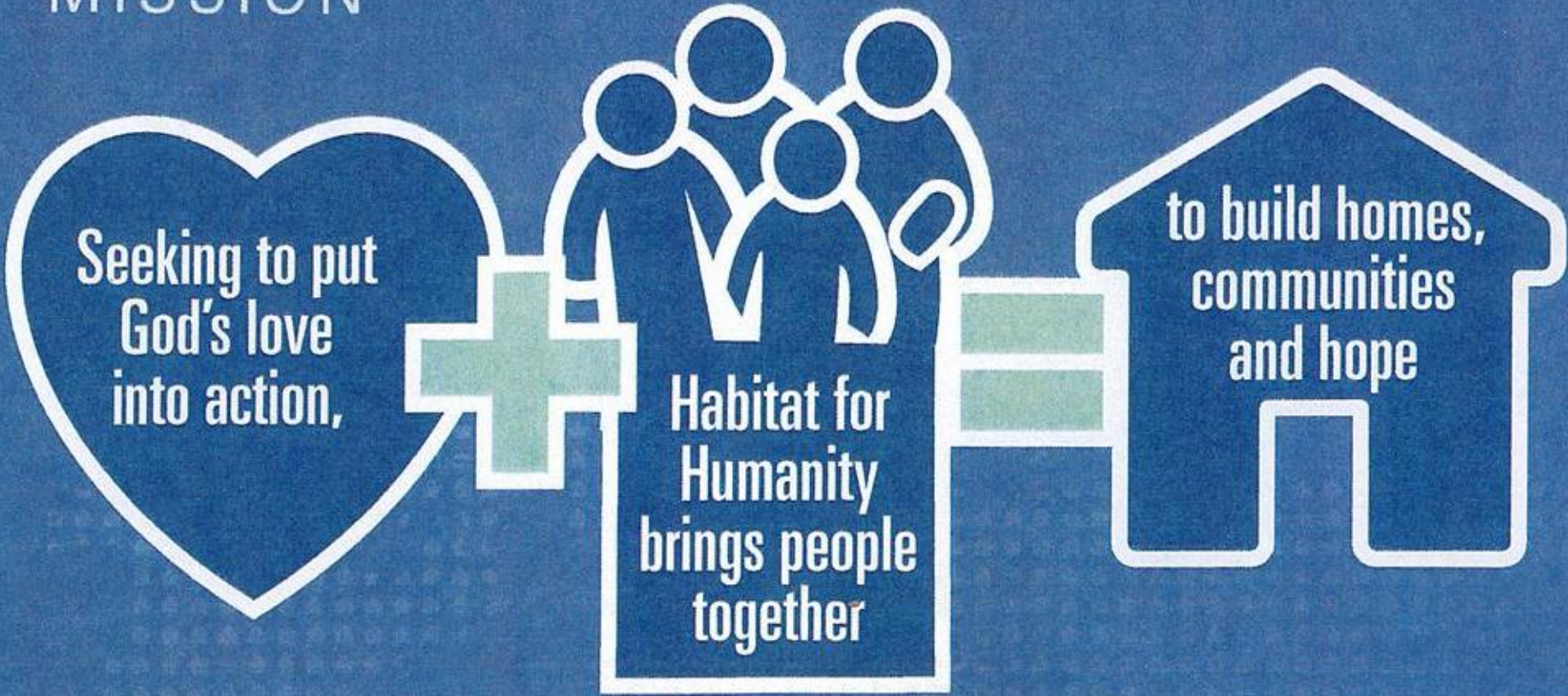




**PROVIDING A
HAND UP NOT
A HAND OUT.**



MISSION



VISION

A world where everyone has a decent place to live.



**TOP
10**

HOMEBUILDER
in the United States

1,500

U.S. AFFILIATES
in all 50 states & D.C.

Habitat builds in partnership
with people in need of
**simple, decent,
affordable housing.**

Habitat Homebuyers



QUALIFICATIONS

Applicants for a Habitat home
must qualify based on need.



SWEAT EQUITY

Homebuyers devote "sweat
equity" hours to help build their
home and others in the
Habitat program.



MORTGAGE

Homebuyers pay an affordable,
no-profit mortgage, which is
used to build more
Habitat homes.

Habitat also...



Repairs low-income
housing



Advocates for fair and just
housing policies



Provides training and access to
resources to help families
improve their housing conditions



Participates in
holistic neighborhood
revitalization efforts



Helps neighborhoods clean up and
rebuild after disasters



Accepts donations of reusable
and new household materials for
resale through its ReStores



Neighborhood Revitalization Initiative

Transforming neighborhoods by providing house repairs for low-income homeowners and rehabilitating vacant and foreclosed properties.

[LEARN MORE >](#)

ESTIMATED WORLD POPULATION¹

1.6 BILLION

people worldwide live in substandard housing conditions.²



1 IN 4 PEOPLE

live in conditions that harm their health, safety, prosperity and opportunities.²

2012
7 BILLION

2030
8.3 BILLION

Without help, by 2030 nearly

3 BILLION

people will live in substandard housing conditions — almost

40% OF THE WORLD.³

By 2050,

70% OF THE WORLD

will live in urban areas...

2050
9.15 BILLION

...causing rates of slum housing to rise.⁴

The current U.S. homeless population is estimated to be between

1.6 TO 3 MILLION PEOPLE.⁵



1/3 of the homeless are **CHILDREN.**⁵

EVERY **5 1/2** MINUTES
HABITAT FOR HUMANITY
SERVES A FAMILY
..... IN NEED OF
DECENT HOUSING



WE ENGAGE APPROXIMATELY
1 MILLION VOLUNTEERS ANNUALLY

WE WILL WORK UNTIL
**PEOPLE IN NEED OF SAFE
AFFORDABLE HOUSING = 0**

PEOPLE SERVED
THROUGH BETTER
HOUSING SOLUTIONS:
3 MILLION
SINCE 1976

IN 2012,
HABITAT SURPASSED
ITS MILESTONE OF
600,000 HOMES
AND KEPT BUILDING

RECORD-BREAKING
94,618
FAMILIES SERVED
IN FISCAL YEAR 2012

HABITAT'S VISION = A WORLD WHERE
EVERYONE HAS A DECENT PLACE TO **LIVE.**

HABITAT.ORG



Habitat
for Humanity®

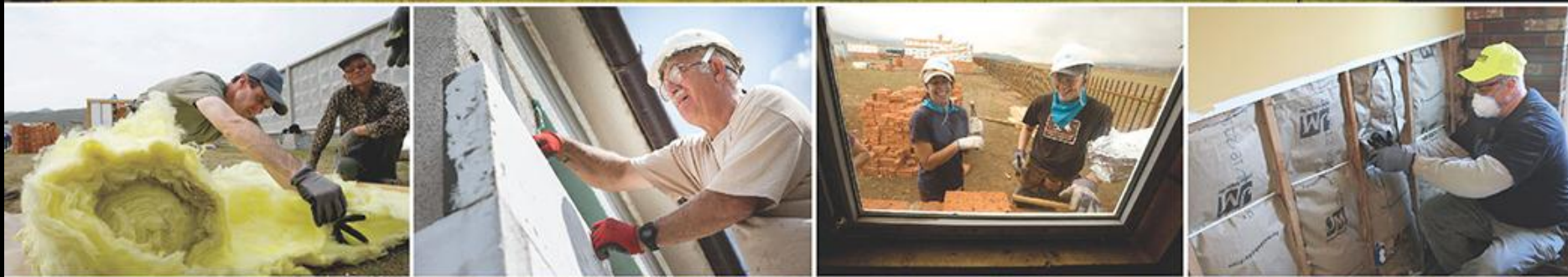
Habitat
on the Hill
Washington, D.C.

Habitat for Humanity International's annual legislative conference
February 10–12, 2015 ★ Washington, D.C.





SHELTER REPORT ²⁰/₁₅



*Less Is More: Transforming Low-Income
Communities Through Energy Efficiency*

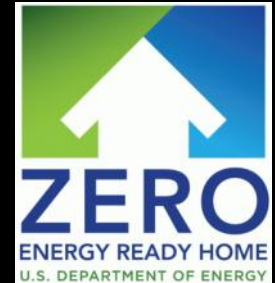


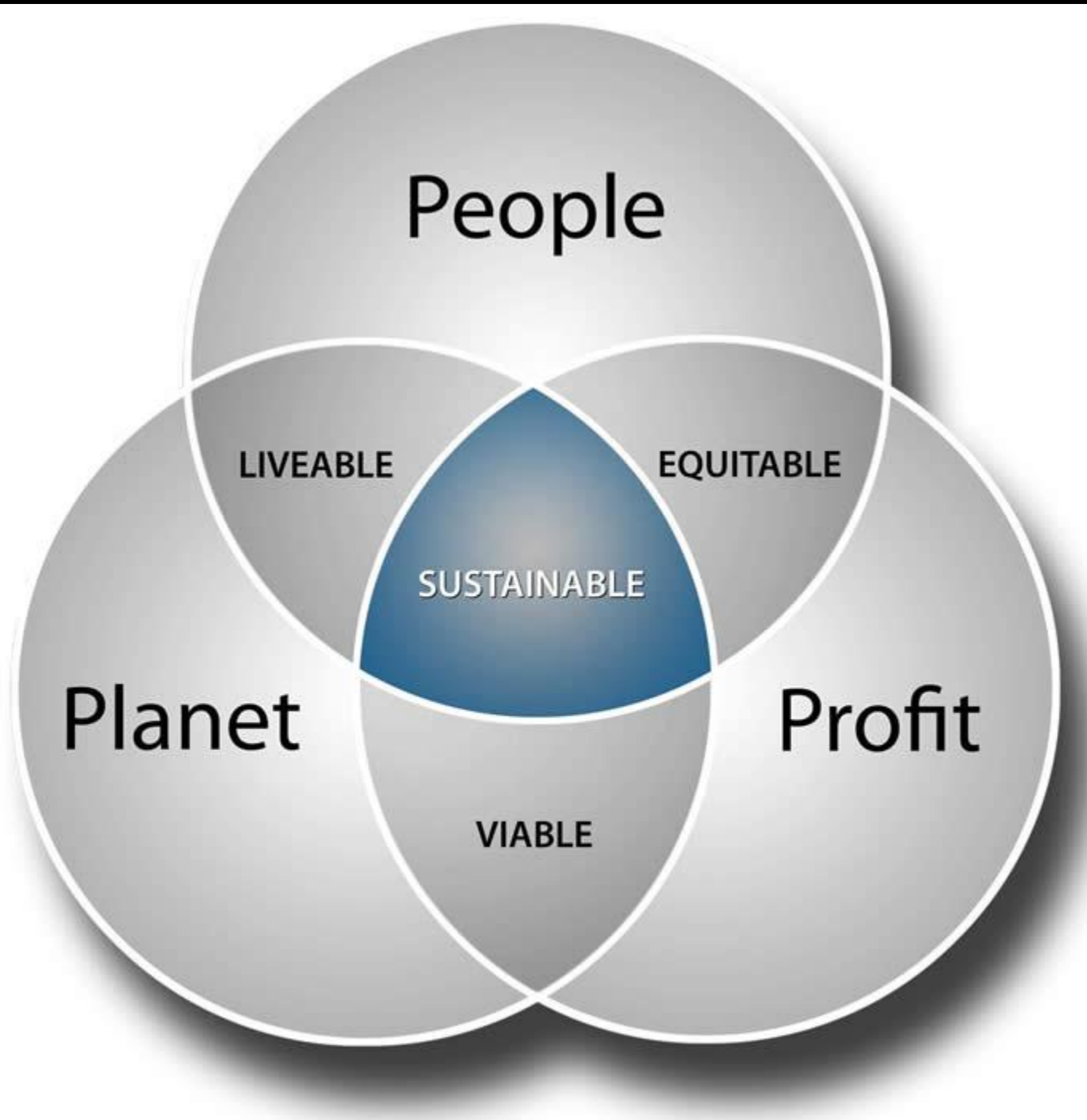
ENERGY STAR



ENERGY STAR
AWARD 2014

PARTNER OF THE YEAR
Sustained Excellence





People

LIVEABLE

EQUITABLE

SUSTAINABLE

Planet

Profit

Viable



- 1. People**
- 2. Partnerships**
- 3. Performance**









HunterDouglas

Panasonic



valspar



2 0 1 4



GreenBuilder

Home of the Year

A W A R D S



**From Hope
To Home**





Become a Volunteer Today!

*Learn new skills, meet new friends, have fun and
help your community!*

[LEARN MORE >](#)



Habitat
for Humanity[®]
of Greater Sacramento

Drought tolerant landscaping

Front and back landscapes designed by
Landscape Architect Roberta Walker



IMPACT

Saves water



Hardie-Plank horizontal siding

Product donated by Hardi-Plank



LEED
IMPACT

Low-maintenance cement-based siding, which provides long-term durability and sustainability of the dwelling



2x6 framing w/R19 insulation



IMPACT

Thicker walls for better insulation all season



Dow exterior tight building wrap

Provided by Dow Chemical



IMPACT

Moisture prevention



Alarm system

Installed by Jim Englander & Electrical Crew



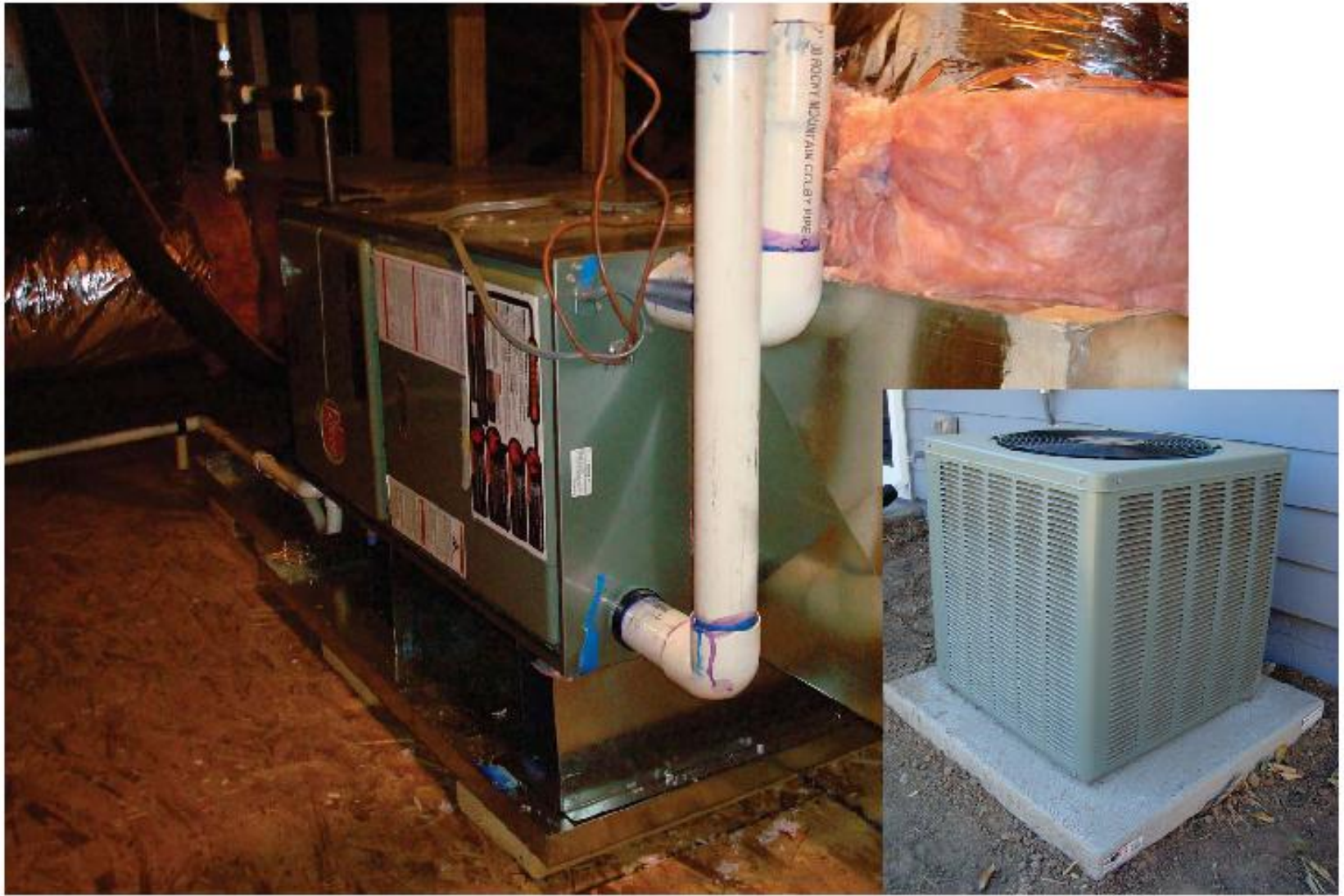
IMPACT

Provides security



HVAC-FAU (Heating, ventilation & AC)

Installed by Capitol Mechanical, Inc.



IMPACT

92% energy efficient, green building friendly system



Upgraded exhaust fans

Installed by Capitol Mechanical, Inc.



IMPACT

System with timers to remove moisture & prevent mold



Low-flow water efficient fixtures

Installed by J.R. Plumbing



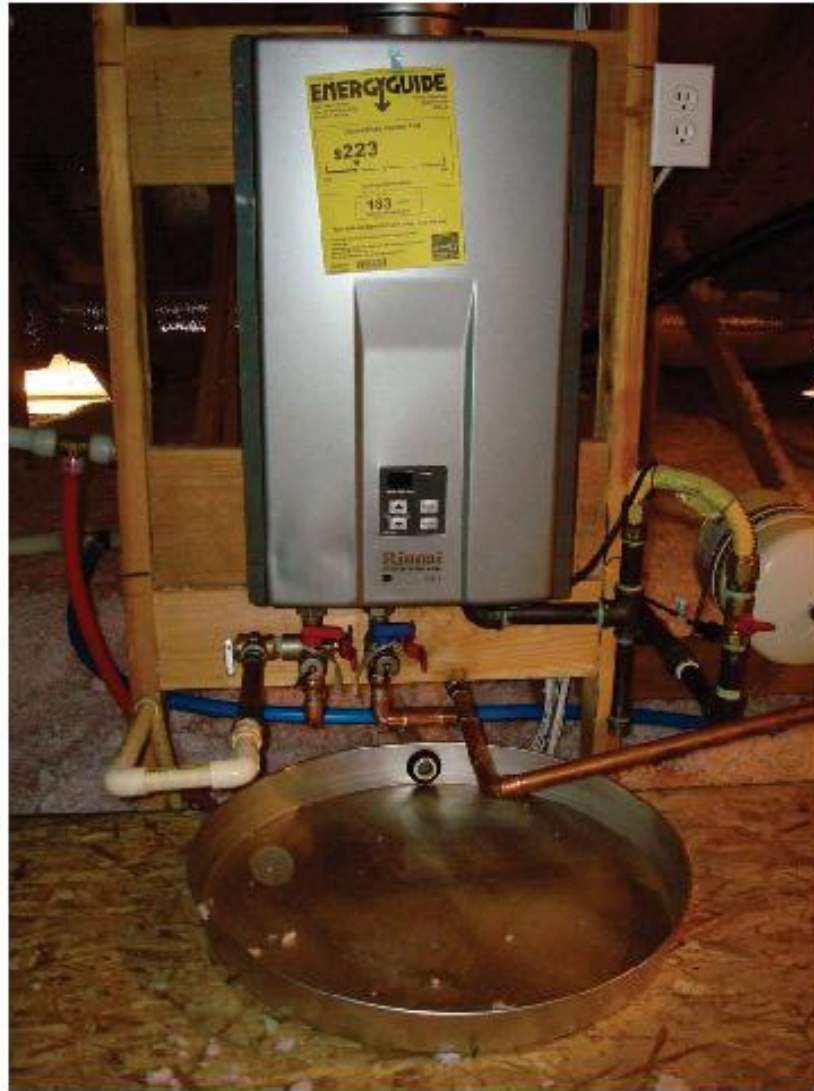
IMPACT

Saves water with 1.5 gpm showerheads & faucets, and ProFlo dual-flush toilets with 1.1gpf/1.6gpf (gal per flush)



Rinnai tankless water-heater

Installed by Capitol Mechanical, Inc.



Rinnai.

Direct Vent Tankless Water Heater



IMPACT

On-demand hot water



Smoke alarms w/CO₂ detectors



IMPACT

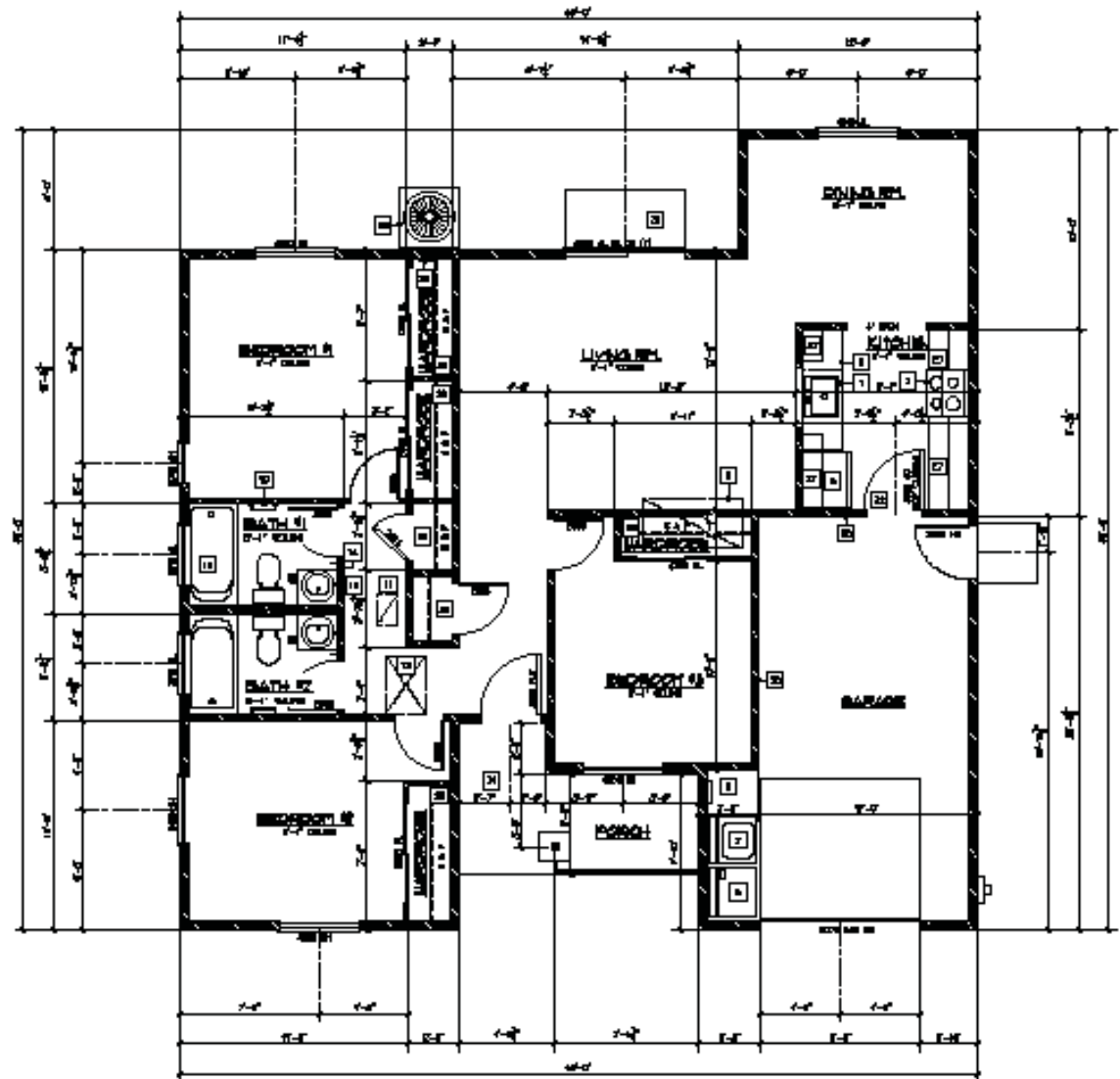
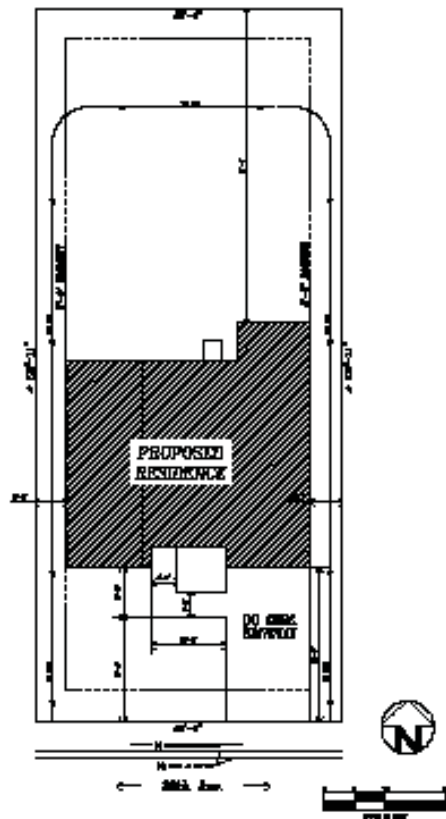
Provides safety



11 Square footage

SQ. FOOTAGE

1ST FLOOR	1074 SQ. FEET
TOTAL CONDITIONED SPACE	1074 SQ. FEET
Garage	252 SQ. FEET
PORCH	64 SQ. FEET
BUILDING FOOTPRINT	1334 SQ. FEET
LOT SIZE	6876 SQ. FEET
LOT COVERAGE %	23.76



Interior all-flourescent lighting



IMPACT

Energy efficient light bulbs that save energy



Low or no VOC carpet & paint

Paint provided by Valspar



IMPACT

Low or no volatile organic compounds (VOC), 50% recycled carpet



Low-E windows & glass

Windows & sliding door provided by Ply-Gem



PLY GEM

BUILDING PRODUCTS. BUILDING SUCCESS.



IMPACT

Energy efficient argon gas-filled glass helps reduce energy loss





Fly ash cement in concrete



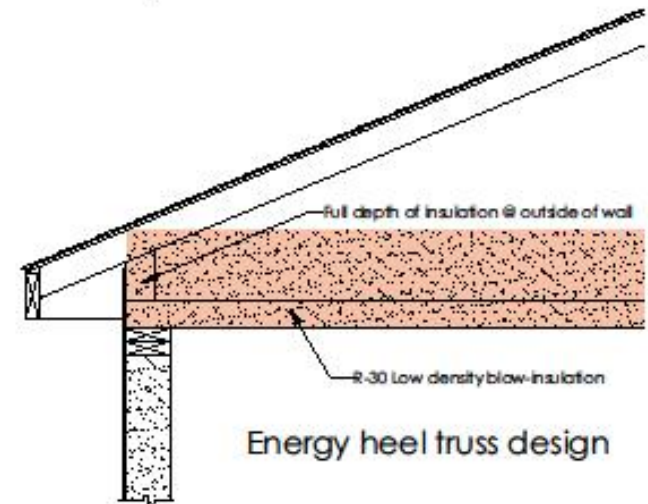
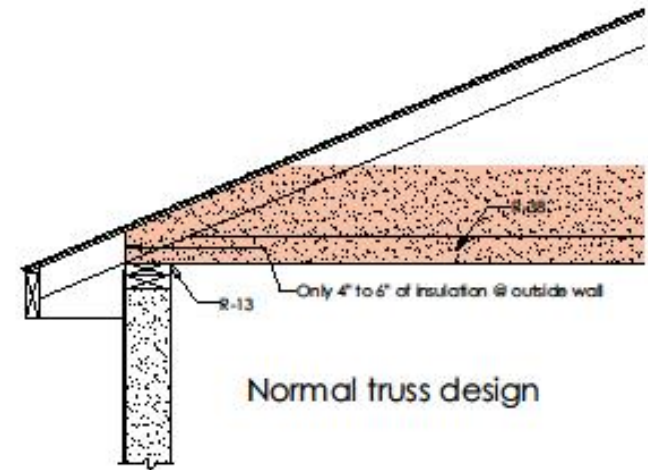
IMPACT

Recycled product that has lower embodied energy than Portland cement



Truss with energy heel

Provided by Homewood Trusses

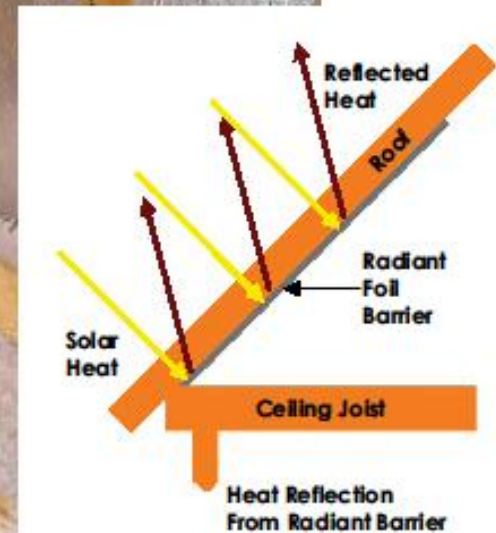


LEED
IMPACT

Allows for proper insulation of the attic space to the outer wall



Roof radiant barrier w/R-38 insulation

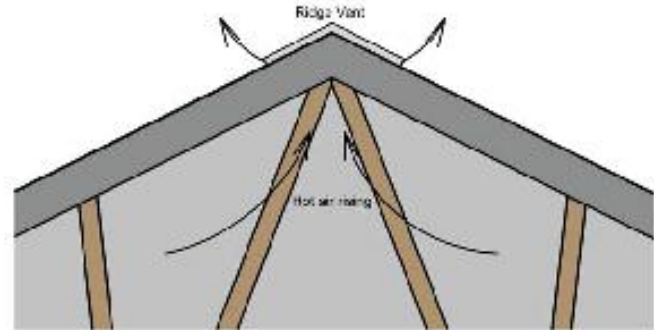


IMPACT

Reduce energy loss



Ridge venting



Solar panels

Provided by the PG&E Foundation



IMPACT

Reduced energy bills



Air Sealing





**Rob Howard, Sustainable Building Specialist
Habitat for Humanity International
rhoward@habitat.org**

**Monte Morris, Director of Construction
Habitat for Humanity of Greater Sacramento
mdmorris@shfh.org**